

Global Experience in Evidence for Building Climate Resilient Health Systems



Diarmid Campbell-Lendrum
Head, Climate Change and Health Unit
WHO HQ

Health impacts are diverse and large





(b) Observed impacts of climate change on human systems

Human systems	Impacts on water scarcity and food production				Impacts on health and wellbeing				Impacts on cities, settlements and infrastructure			
	Water scarcity	Agriculture/crop production	Animal and livestock health and productivity	Fisheries yields and aquaculture production	Infectious diseases	Heat, malnutrition and other	Mental health	Displacement	Inland flooding and associated damages	Flood/storm induced damages in coastal areas	Damages to infrastructure	Damages to key economic sectors
Global	±	-	○	-	-	-	-	-	-	-	-	-
Africa	-	-	-	-	-	-	○	-	-	-	-	-
Asia	±	±	-	-	-	-	-	-	-	-	-	-
Australasia	±	-	±	-	-	-	not assessed	-	-	-	-	-
Central and South America	±	-	±	-	-	-	not assessed	-	-	-	-	-
Europe	±	±	-	±	-	-	-	-	-	-	-	-
North America	±	±	-	±	-	-	-	-	-	-	-	-
Small Islands	-	-	-	-	-	-	○	-	-	-	-	-
Arctic	±	±	-	-	-	-	-	-	-	-	-	±
Cities by the sea	○	○	○	-	○	-	not assessed	-	○	-	-	-
Mediterranean region	-	-	-	-	-	-	not assessed	-	±	-	○	-
Mountain regions	±	±	-	○	-	-	○	-	-	na	-	-

Confidence in attribution to climate change

- High or very high
- Medium
- Low
- Evidence limited, insufficient
- na Not applicable

Impacts to human systems in panel (b)

- Increasing adverse impacts
- ± Increasing adverse and positive impacts

From identifying research gaps to co-developing agendas and “horizon scanning” for new risks



Coming soon: consultation on research priority setting



Making global evidence relevant and accessible

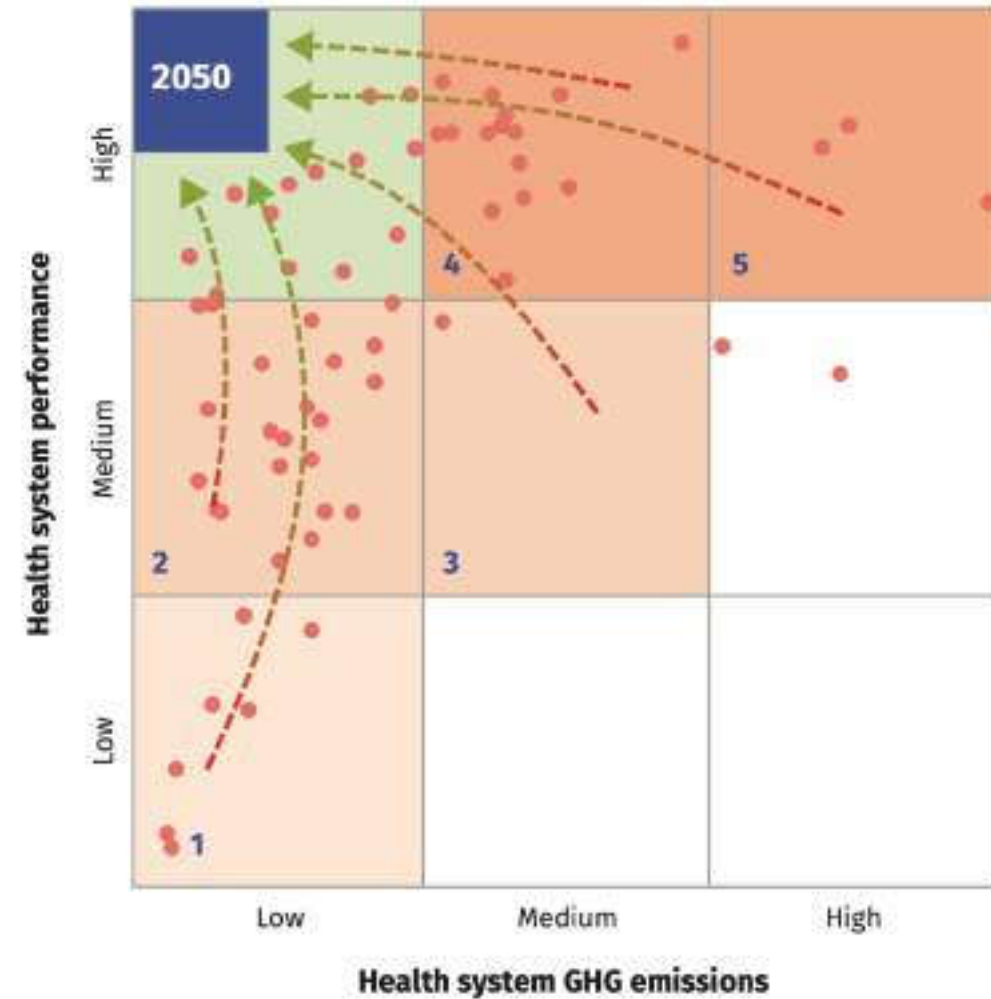
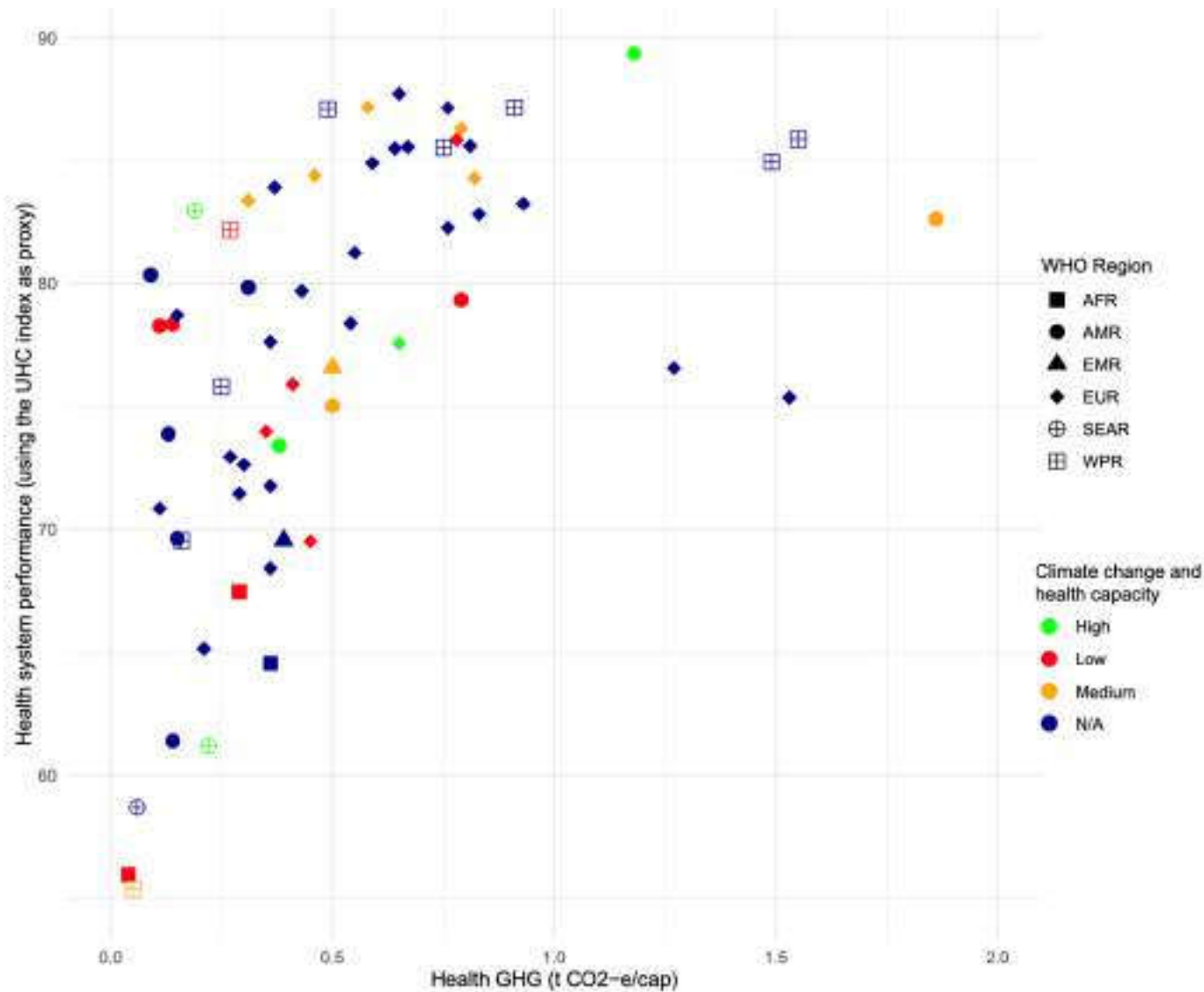


1990 to 2023:

Transition from global reports to locally relevant profiles of risks, impacts, opportunities and progress



Health systems performance, health sector GHG per capita emissions, and CCH capacity



Different pathways for building climate resilient and low-carbon health systems

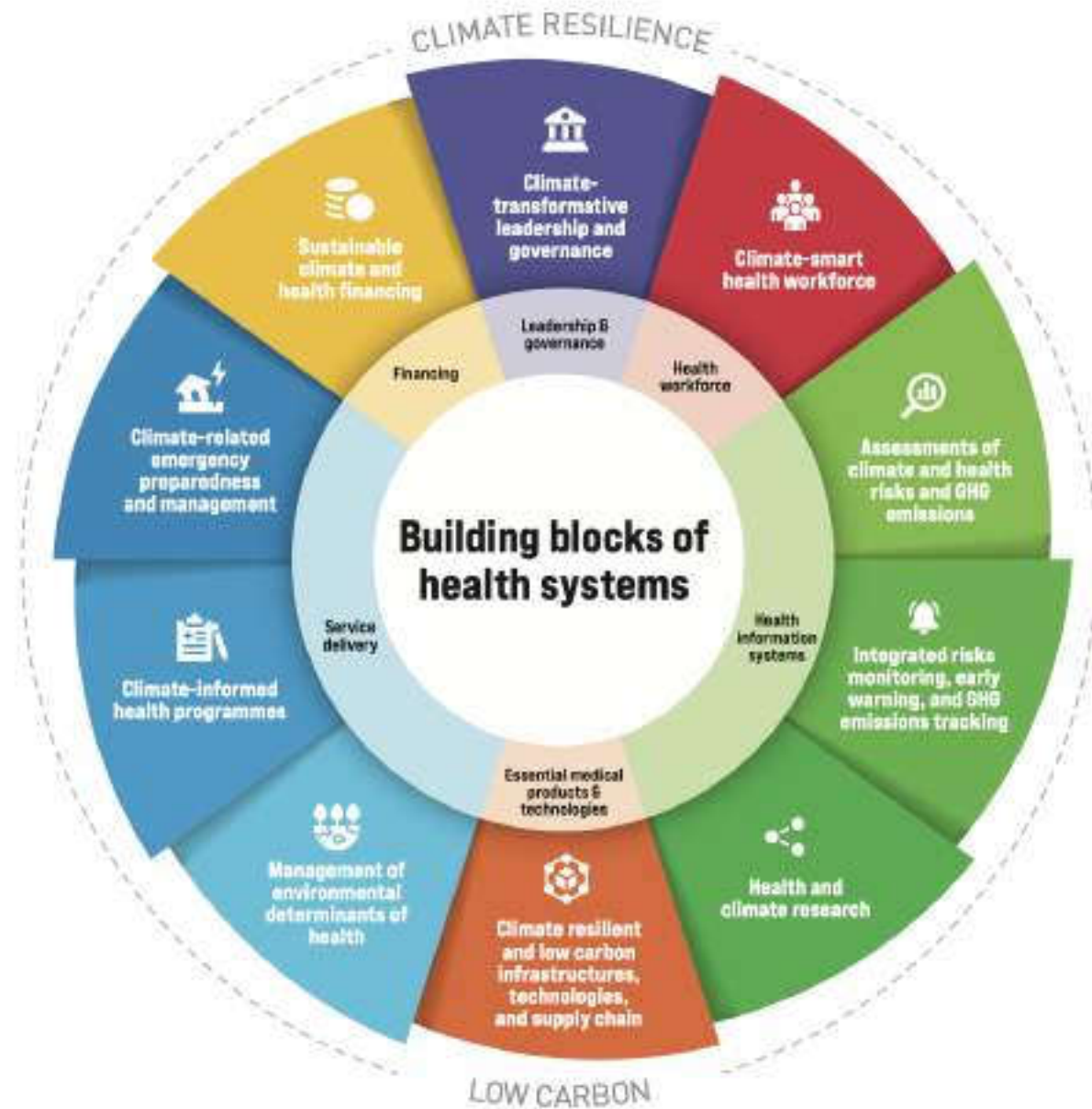
Area	Health system performance	Health sector GHG emissions	Climate resilience and low carbon pathways
1	Low	Low	Focus on climate resilience while adopting sustainable low carbon technologies
2	Medium	Low	Strengthen climate resilience while introducing sustainable low carbon interventions
3	Medium	Medium	Strengthen both climate resilience and low carbon sustainability
4	High	Medium	Strengthen low carbon sustainability while promoting climate resilient health systems
5	High	High	Focus on achieving net zero emissions while continuing to promote climate resilience
Target	High	Low	Net zero emissions and climate resilience by 2050

WHO Operational framework for climate resilient and Low-carbon health systems

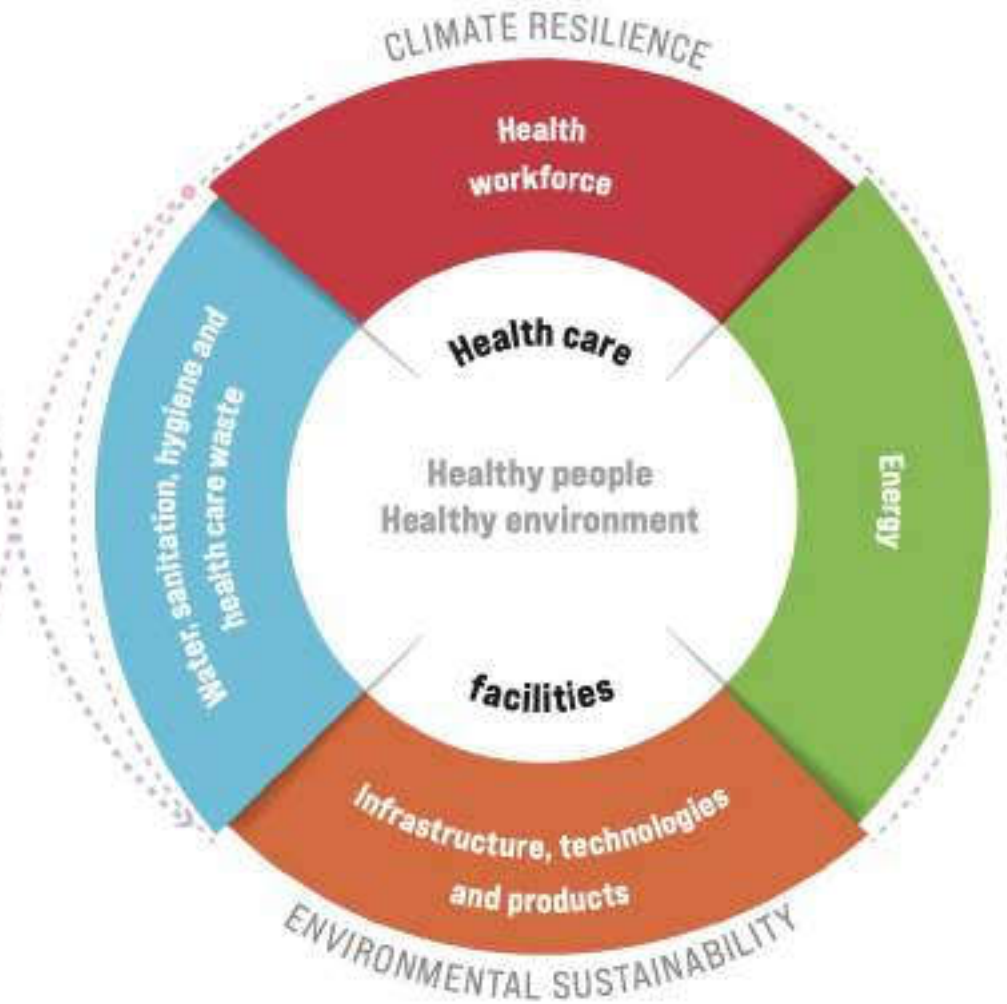
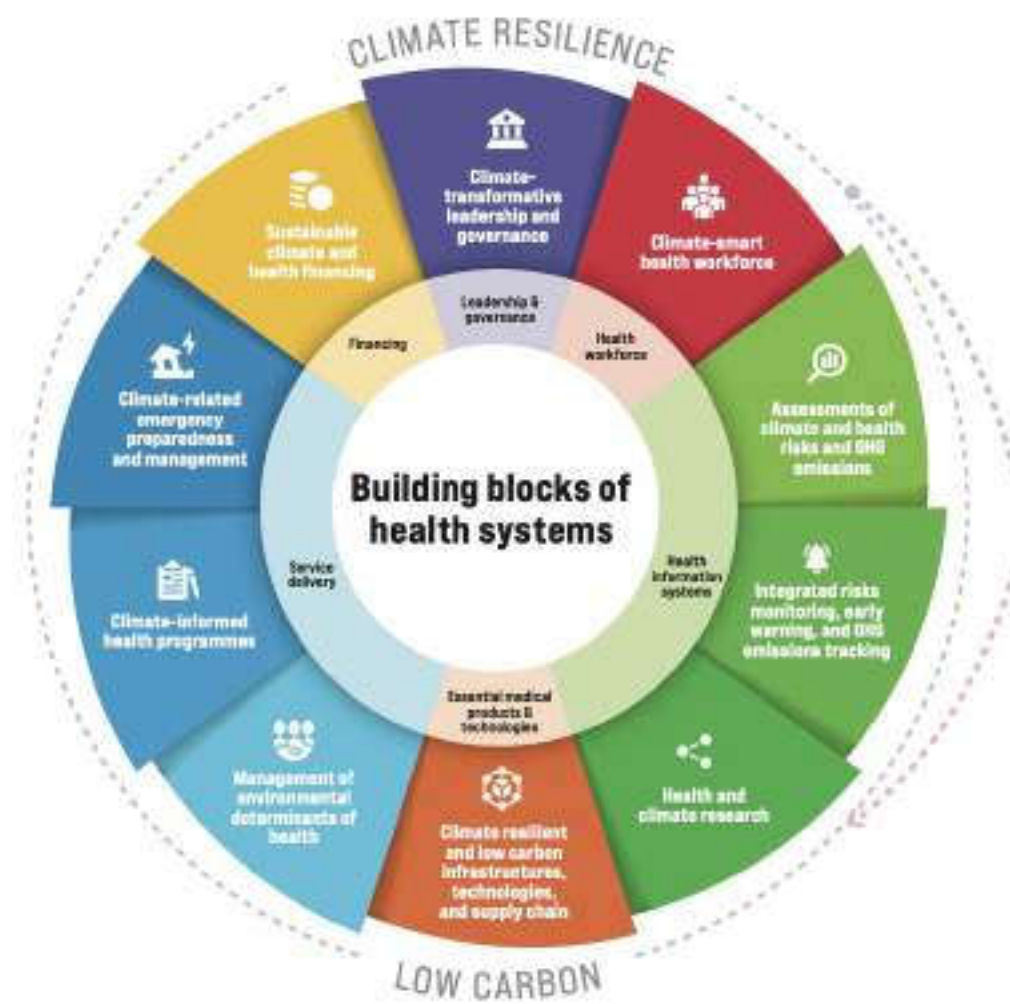
Structured around **building blocks** of health systems

Proposed **interventions** around 10 components and **indicators** to assess progress

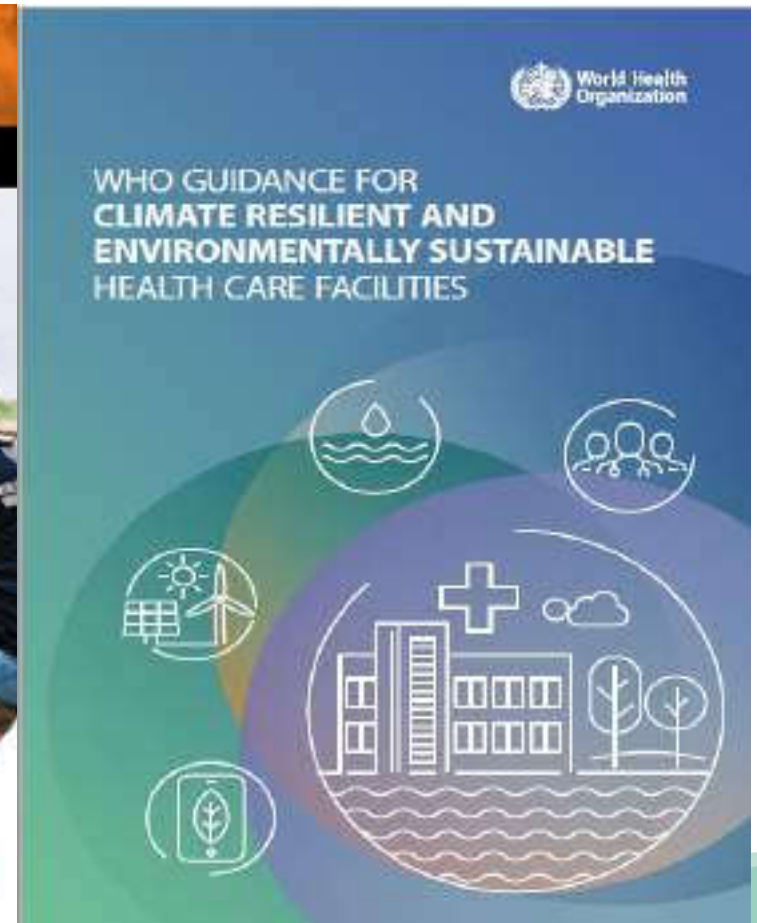
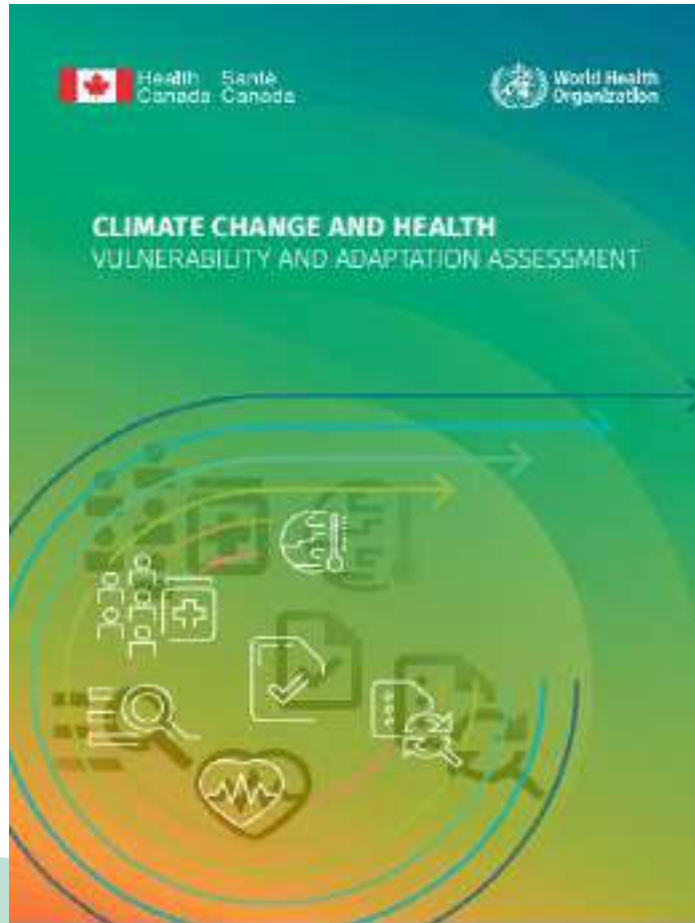
Climate resilient and low carbon health systems are those capable of anticipating, responding to, coping with, recovering from, and adapting to climate-related shocks and stresses, while minimizing GHG emissions and other negative environmental impacts to deliver quality care and protect the health and well-being of present and future generations.



More focussed approach at health care facility level

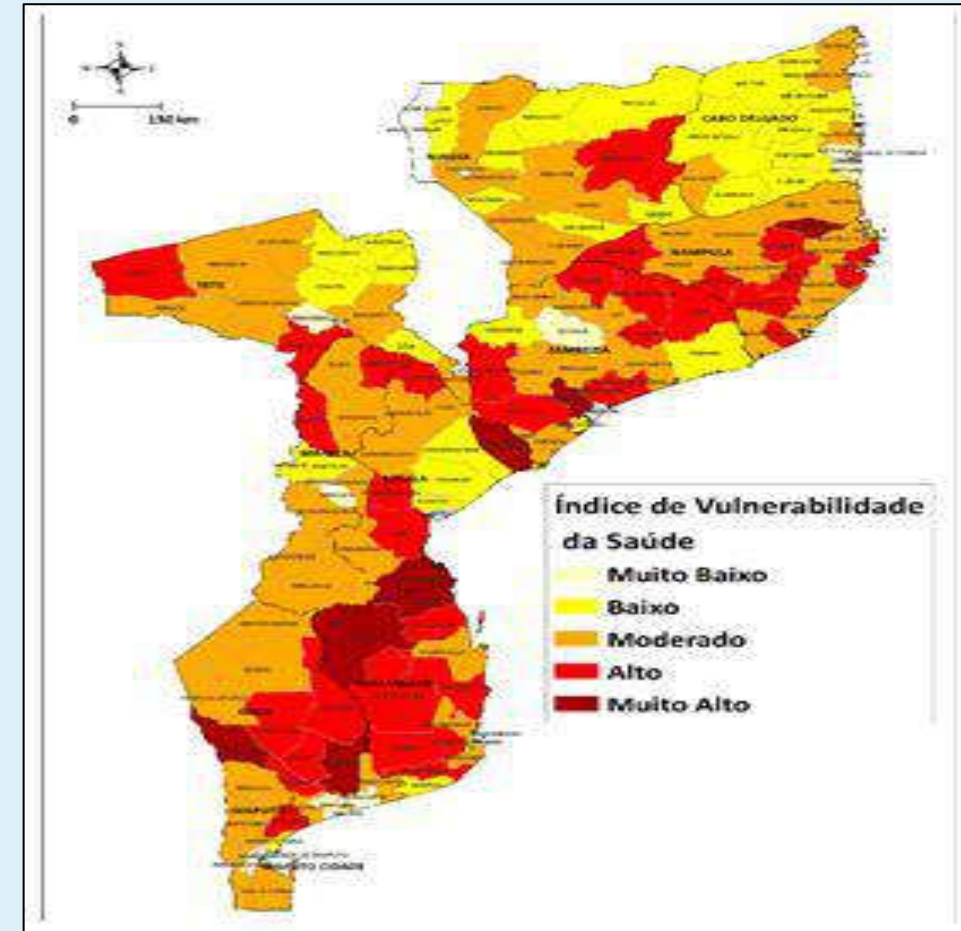


Guidance exists for all of these steps



Mozambique

- V&A assessment finalized which includes a Health Vulnerability Index (HVI) by district.
- Evidence gathered with V&A used to develop draft H-NAP.
- Health Vulnerability Index (HVIs) by district used to develop protocol for assessing vulnerability in HCFs.
- Capacity strengthened at MoH and NIH on CCH, including V&A, HNAP, climate informed surveillance, CRESHCFs and CR-WASH.
- University curricula developed.
- Research agenda on climate change and health developed.
- EWARS dashboard developed for integration of weather, health and vector data.



Health Vulnerability Index (HVIs) by district of Mozambique,, May 2020

Example: Current Climate & Health Financing Projects in Timor L'Este

Project Name	Amount \$	Finance	Project Duration	Key Activities
Healthcare Actions through Rapid Infrastructure Investments ("HARI'I") Project	50M	WB	2023-2028	<ul style="list-style-type: none"> HARI'I Project focuses on the extremely climate-vulnerable municipalities Ermera, Lautem, and Viqueque, home to a quarter of Timor-Leste's predominantly rural population Constructing three resilient municipal hospitals, with energy-efficient equipment, and upgrading 110 primary care facilities. Project will support the provision of energy-efficient medical equipment to two tertiary care hospitals
<ul style="list-style-type: none"> Grant funding Energy Sector Management Assistance Program Health Emergency Preparedness and Resilience Trust Fund (HEPR-TF) Project 	250K	ESMPA HEPR-TF		
WHO/UNDP/GEF Project on Building Resilience of Health Systems in Asian LDCs to Climate Change	1.077M 240K WHO CO 1.5M Govt CO	GEF	2017-2024	<ul style="list-style-type: none"> Establishment of Water Treatment System in Maliana Referral Hospital & Baucau Simulation Skills Center Conducting Solar Feasibility Assessments and installation of Solar PV system in Baucau Simulation Skills Center, CHC Trilolo Assessment of Clean Household Energy in TLS using WHO's Household Energy Assessment Tool (HEART) General Climate and Health V and A assessment for TLS and development of HNAP and EH strategy Support to develop SOPS for National Health Laboratory on Water Quality and Food Safety National Training on Climate Sensitive Diseases and EWARS for MOH Pilot Tested Climate Resilient and Environmentally Sustainable (CRESH) Score Card National Health Care Waste Management Policy is developed Climate Resilient and Environmentally Sustainable Health Care Facilities Policy and Strategy is developed Climate and Health Research : Conducting Health Vulnerability and Adaptation Assessments and Development of Climate and Health Risk Profile for all the Municipalities Many activities planned including conducting health sector carbon emission study and development of CR WSSP and CR SSP, establishing EWARS for climate sensitive disease surveillance etc





Raising political ambition

COP26/27 Presidency Health initiatives

76 Countries committed at Minister level

ATACH brings together

Countries, agencies, technical experts, UN Agencies, MDBs, NGOs

to support delivery through:

Advocacy, technical support, knowledge sharing, monitoring & access to finance

Convened by the UK, Egypt and UAE as COP Presidents



ATACH Working Groups

Chairs

Climate Resilience

Ivory Coast and Health
Canada

Decarbonization

Lao PDR and HCWH

Supply-chains

Bangladesh and NHS
England

Finance

Germany and World
Bank

Nutrition and Climate Action (I-
CAN)

GAIN and Egypt



Thank you

Muito Obrigado!